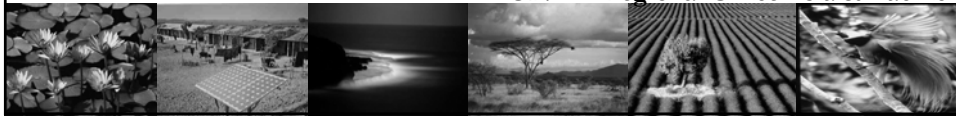




# UNEP/GEF Project Monitoring & Evaluation Plan

## - Introduction -

Max Zieren  
Division of Environmental Policy  
Implementation  
UNEP- Regional Office Asia & Pacific



## Key elements and approach-1



Integral part of contract with UNEP – *consistent w. GEF Policy*

1. Substantive & Financial reporting (incl. co-finance)
2. Costed M&E Plan (part of project budget):
  - *Outcome (impact) Monitoring*: Project Results Framework/Logframe - SMART
  - *Implementation Progress Monitoring*: Key Deliverables and Benchmarks

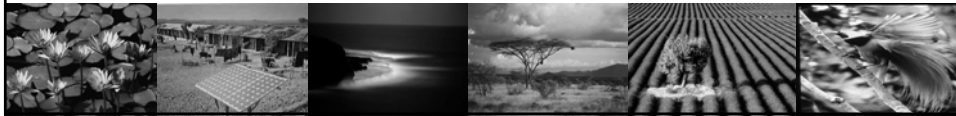




## Key elements and approach - 2



- GEF Tracking Tools (BD-2; CC3, CC5 & SFM/REDD+)
  - Midterm Review (MTR) and Terminal Evaluation (TE)
  - Project SC Meetings
4. Annual PIR – project implementation review
  5. Supervision UNEP Task Manager – *project supervision plan, visits, outcomes, quality review outputs, guidance*



## Monitoring project impact against baseline

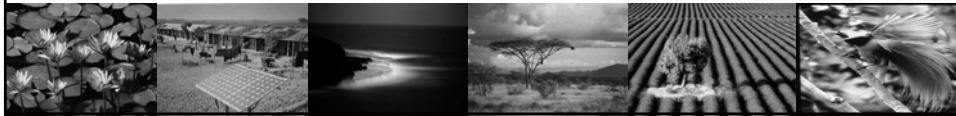




## Costed M&E Plan



- **Fully budgeted plan:** indicators, **baselines**, targets at midterm- and end of project, timeframe, **who does what**.
- Use **SMART indicators:** specific; measurable; achievable & attributable,;relevant & realistic; time-bound, trackable & targeted
- Fine-tuning during FSP inception
- M&E reporting part of Progress Report, PIR etc
- Advised to put **one EA staff in charge/coordination**



### a. Project Results Framework



- Measures consolidated **Project Impact**
- Logframe: with indicators, midterm and end-of-project targets
- **Only** at project Outcomes level
- Choose just 2-3 indicators/outcome
- Regular tracking/annual surveys
- Need for baselines during PPG (*role for provincial, site and national partners*)
  - Key RIMBA: institutional capacity GE, awareness levels, Carbon stock & fluxes, forest types and areal, peatlands & hydrology, etc
  - Also: Assess institutional management capacity assessment & fiduciary standards – example: UNEP summary table





## b. Key Deliverables & Benchmarks

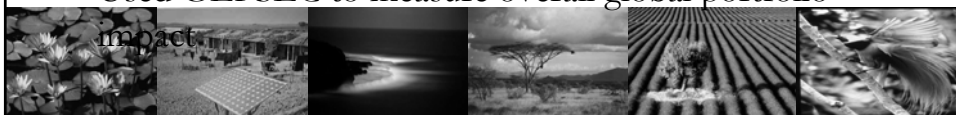
- **Progress** monitoring
- Only on final Outputs, deliverables, key benchmarks (incl. time bound targets)
- Table: descriptive as well as ...% completion



## GEF Tracking Tool



- GEF tracking tools BD-2 Mainstreaming biodiversity, CC3 Renewable energy, CC-5 LULUCF, SFM/REDD & GEF capacity score card
- Part of project document for GEF endorsement
- 3 times updated: start/baseline, midterm and project completion
- Submitted to GEFSEC with Project Implementation Review (PIR) reports
- Used GEFSEC to measure overall global portfolio

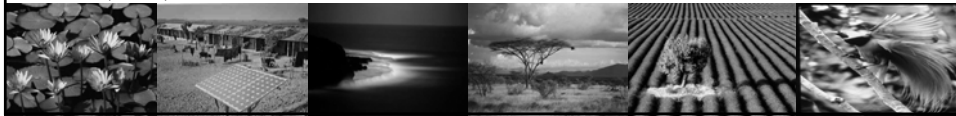




## Midterm Review (MTR)



- MTR – participatory, half-way the project
- Review of all activities & impact since start
- Desk Review of official documents – progress and technical reports, meeting minutes, mission reports, etc
- Field visits & reviews
- National Midterm Workshops
- Interviewing project staff, institutions and other (site) stakeholders



## Steering Committee



- Project SC: chance to build broad effective partnership with regions & line agencies through its choice of members (also main co-funding partners, plus UNEP)
- Draft ToR for SC
- PPG to set membership SC
- SC: Project guidance, follow up on MTR, annual project review meetings
- SC secretariat held by Project Implementation Unit





Monitor impact & delivery!

