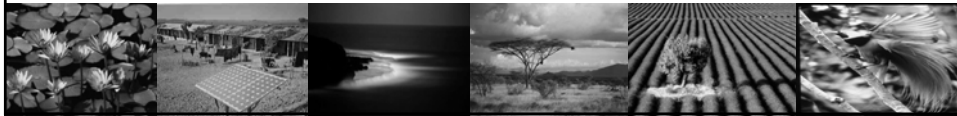




Alignment RIMBA with GEF & STAP Review

Max Zieren, UNEP - Division of Environmental Policy
Implementation (DEPI)
Regional Office Asia and Pacific, Bangkok



Principles



- Formal requirement to respond to GEFSEC, STAP and Council comments at CEO Endorsement (completion of PPG)
- Done through e.g. changes, clarifications & strengthening of RIMBA project design, OR motivated rejection of comments





Summary of key review points:



General & conceptual :

- Concept conceptually sound – yet insufficient detail to assess whether project will be successful;
- Better define the term Green Economy (GE); better describe activities to achieve GE, as well as on specific GE targets set for RIMBA;
- Strengthen the evidence base on previous successful GE initiatives;
- Need for better rationale for three distinct investment sites & their alignment;



- Fix definition of Ecosystem Services e.g. used for Natural Capital (Accounting); and what data and database support for NCA?
- Conduct comprehensive risk assessment of oil palm in RIMBA and adequacy of project dealing with this sector;
- Also, how will project deal with leakage (various sectors), including illegal trade?





Project M&E Plan :

- Develop detailed Project M&E Plan, including baseline of indicators of globally threatened biodiversity (forest and fauna);
- Better specify deforestation rates as well as degraded area in RIMBA corridor, and its specific drivers. Be clear on targeted areas for rehabilitation.
- Align project carbon assessment with REDD+ methodologies;



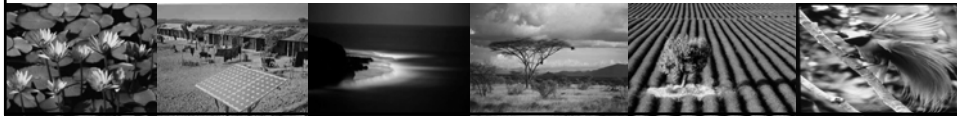
- Calculate carbon stock in degraded forest land and areas not covered in baseline projects – separate for peatlands and forests;
- Calculate GHG emission reduced or stock increased due to project, considering local detailed situation and leakage;
- Carbon baseline, fluxes and benefits to incorporate the various government programs, trends and impacts in forestry already taking place without GEF project.





Institutional:

- Clarify coordinating role of MoHA, and role of each technical ministry (& other partners);
- Suggested to apply FMU to support reform & good governance in local forestry sector;
- Forests outside the Forest Estate need to be included in RIMBA – not just those under mandate of Min of Forestry.



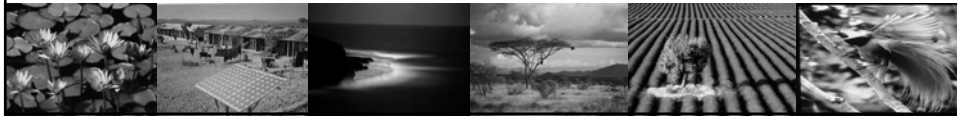
Thematic & technical approach:

- Detail needed on how to operationalize and sustain PES schemes, as well as its measurable results on the ground;
- Strengthen incremental reasoning of GEF support for RE activities RIMBA; how RE linked to rest of proposal;
- Provide detailed baseline and pre-feasibility for RE e.g. micro-hydro, biomass, others;





- Targeted areas for (full) forest restoration or protection seem unfeasible given its too complicated and lack of resources available, specifically to restore – what criteria being used?
- Heavy focus on spatial planning – but not clear what this incorporates (both e.g protection, urban areas, restoration etc).



TRIMS !

